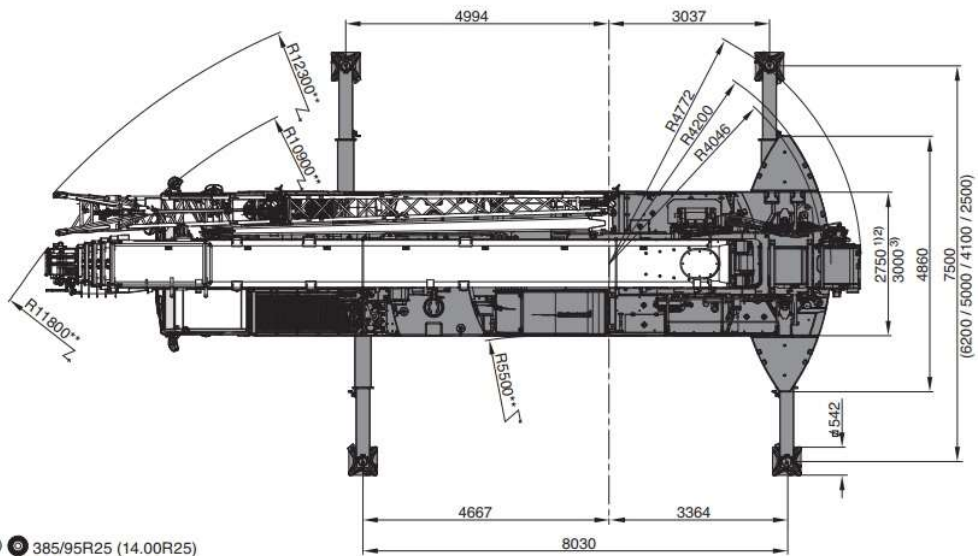


\* -120 / + 155



- 1) 385/95R25 (14.00R25)
- 2) 445/95R25 (16.00R25)
- 3) 525/80R25 (20.5R25)

\*\* Minimum - Minimum - minimum - minimo - minimo - minimo - мінімальны



Stempelschotten	Stempelbasis	Draaicirkel ballast	Hoofdmast lengte	Jib lengte	Hijsblok gewicht
2.40m x 2m	7.50m x 8m	4.20 m	56m	19m	8.8T = 250kg 26 T = 450kg 50T = 700kg





	m	38.7	38.7	41.1	43.0	43.0	43.0	43.0	43.0	47.4	47.4
2.5											
2.7											
3.0											
3.5											
4.0											
4.5	21.3										
5.0	21.3	20.5	16.7								
6.0	21.3	20.5	16.7	27.1	23.1	20.7	19.7	19.0			
7.0	20.9	20.4	16.7	27.1	23.1	20.4	19.7	19.0	21.4	18.6	
8.0	20.0	19.5	16.7	27.1	23.1	19.6	19.7	18.7	21.4	18.6	
9.0	19.0	18.6	15.6	27.1	23.1	18.9	19.7	18.1	21.4	18.6	
10.0	18.2	17.2	14.4	26.2	22.4	18.2	19.7	17.4	21.4	18.6	
11.0	17.4	16.0	13.4	24.8	21.6	17.5	19.0	16.8	21.3	18.6	
12.0	16.6	15.0	12.4	22.9	20.9	16.8	18.0	15.7	20.6	18.0	
14.0	15.0	13.2	10.9	18.7	19.5	15.6	16.1	14.0	18.4	16.7	
16.0	13.6	11.8	9.7	15.6	16.3	14.4	14.5	12.6	15.4	15.2	
18.0	12.4	10.6	8.6	13.1	13.8	13.2	13.2	11.4	13.0	13.9	
20.0	11.4	9.6	7.8	10.8	11.5	12.2	12.0	10.4	11.1	11.8	
22.0	10.4	8.8	7.0	9.0	9.7	10.5	10.3	9.6	9.3	10.0	
24.0	9.6	8.1	6.4	7.6	8.2	9.0	8.8	8.9	7.8	8.5	
26.0	8.3	7.5	5.8	6.4	7.0	7.8	7.6	8.2	6.6	7.3	
28.0	7.3	6.9	5.3	5.4	6.0	6.8	6.6	7.3	5.6	6.3	
30.0	6.4	6.4	4.9	4.5	5.1	5.9	5.7	6.4	4.7	5.5	
32.0	5.7	5.8	4.6	3.8	4.4	5.2	5.0	5.7	4.0	4.7	
34.0	5.1	5.1	4.2	3.2	3.8	4.5	4.4	5.0	3.4	4.1	
36.0	4.5	4.6	3.9	2.6	3.2	4.0	3.8	4.5	2.8	3.5	
38.0			3.7	2.1	2.7	3.5	3.3	4.0	2.3	3.0	
40.0				1.7	2.3	3.1	2.9	3.5	1.9	2.6	
42.0									1.5	2.2	
44.0									1.2	1.9	
46.0											
48.0											
50.0											
52.0											
54.0											
56.0											



	m	47.4	50.5	51.7	51.7	56.0
	2.5					
	2.7					
	3.0					
	3.5					
	4.0					
	4.5					
	5.0					
	6.0					
	7.0	15.7	12.9	16.6	14.3	
	8.0	15.7	12.9	16.6	14.3	13.2
	9.0	15.7	12.9	16.6	14.3	13.2
	10.0	15.7	12.9	16.6	14.3	13.2
	11.0	15.7	12.9	16.6	14.3	13.2
	12.0	15.4	12.9	16.6	14.3	13.2
	14.0	14.3	12.6	16.1	14.1	13.2
	16.0	13.3	11.3	15.2	13.2	12.9
	18.0	12.1	10.2	13.1	12.4	12.3
	20.0	11.1	9.4	11.2	11.6	11.4
	22.0	10.3	8.5	9.6	10.5	9.9
	24.0	9.3	7.7	8.2	9.0	8.5
	26.0	8.1	7.0	7.0	7.8	7.3
	28.0	7.0	6.4	5.9	6.7	6.3
	30.0	6.2	5.9	5.1	5.9	5.4
	32.0	5.4	5.4	4.3	5.1	4.7
	34.0	4.7	4.8	3.7	4.5	4.0
	36.0	4.2	4.2	3.1	3.9	3.5
	38.0	3.7	3.7	2.6	3.4	3.0
	40.0	3.2	3.2	2.2	2.9	2.5
	42.0	2.8	2.8	1.8	2.5	2.1
	44.0	2.5	2.5	1.4	2.2	1.8
	46.0		2.2	1.1	1.9	1.4
	48.0		1.9		1.6	1.1
	50.0					0.9
	52.0					
	54.0					
	56.0					