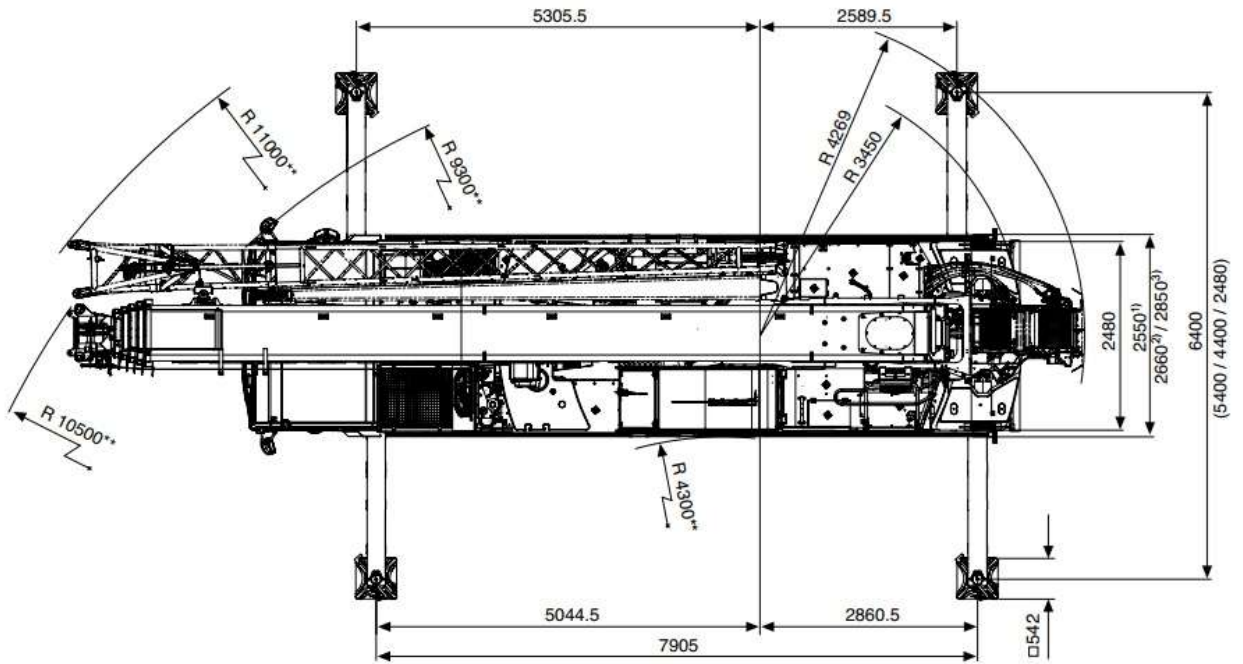


* ± 100



** Minimum · minimum · mínimo · minimo · мінімальны

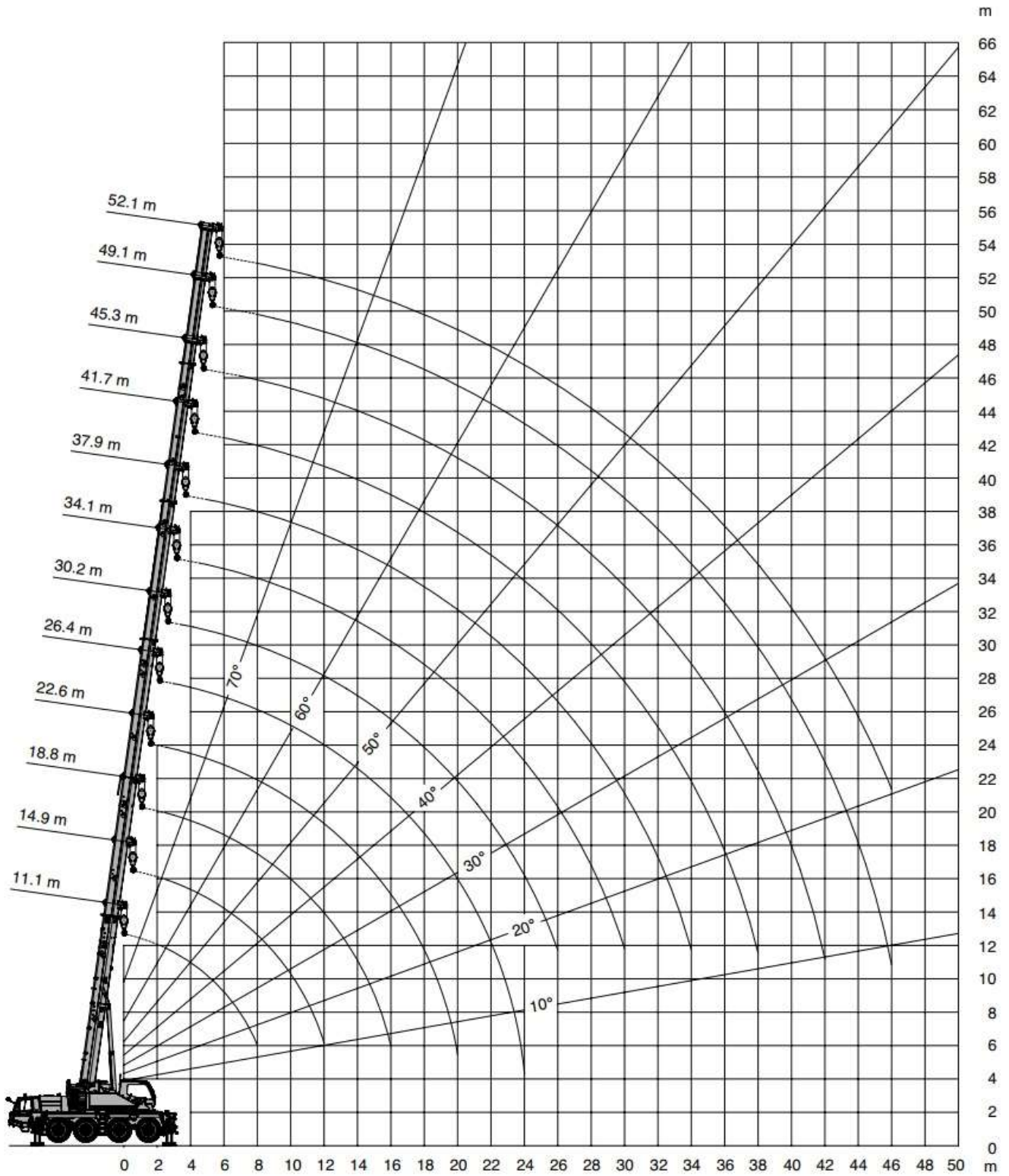
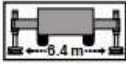
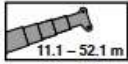
- ¹⁾ 385/95 R 25 (14.00 R25)
- ²⁾ 445/95 R 25 (16.00 R25)
- ³⁾ 525/80 R 25 (20.5 R25)

Stempelschotten	Stempelbasis	Draaicirkel ballast	Hoofdmast lengte	Jib lengte	Hijsblok gewicht
2.20m x 1,2m	7.9m x 6.4m	3.5m	52m	(geen jib)	8.8T = 250kg 26 T = 450kg 50T = 700kg



JAC. V.D. VEGT & ZN bv
KRAANVERHUUR & TRANSPORT

038-3314466 – info@jacvdvegt.nl






JAC. v.d. VEGT & ZN bv
KRAANVERHUUR & TRANSPORT

038-3314466 – info@jacvdvegt.nl

Operation · Einsatz · Utilisation
Uso · Эксплуатация

Lifting capacities · Traglasten · Charges de levage
Cargas · Portate · Грузоподъемность



 m	11.1 m*	11.1 m	14.9 m	18.8 m	22.6 m	26.4 m	30.2 m	34.1 m	37.9 m	41.7 m	45.3 m	49.1 m	52.1 m
2.5	70.0**	57.6	54.9	53.7	39.9								
3.0	62.5	52.4	50.5	48.7	39.9	26.2							
3.5	57.4	48.1	46.3	44.6	39.9	33.4	20.8						
4.0	53.0	44.4	42.7	41.1	39.9	31.0	24.7						
4.5	49.1	41.1	39.6	38.1	37.5	28.9	24.7	19.5					
5.0	45.7	37.4	37.0	35.5	34.9	27.0	24.7	19.5	12.9				
6.0	39.3	31.4	31.5	30.9	30.7	26.2	23.0	19.5	14.2	10.9			
7.0	33.2	26.8	26.9	26.9	26.7	26.2	20.8	19.5	14.2	10.9	8.3		
8.0	27.8	23.1	23.3	23.3	23.1	23.7	20.5	18.0	14.2	10.9	8.3	6.8	5.8
9.0			20.7	20.4	20.5	20.8	19.2	16.5	14.2	10.9	8.3	6.8	5.8
10.0			18.4	18.0	18.7	18.4	18.0	15.1	13.4	10.9	8.3	6.8	5.8
12.0			14.4	14.9	14.9	14.8	14.8	12.9	11.7	10.6	8.3	6.8	5.8
14.0				11.5	11.7	12.0	11.6	11.2	10.4	9.4	8.3	6.8	5.8
16.0				9.2	9.7	9.6	9.3	9.0	9.3	8.4	7.8	6.8	5.8
18.0					7.9	7.8	7.6	7.9	7.5	7.3	7.1	6.6	5.8
20.0					6.5	6.5	6.9	6.6	6.3	6.0	6.2	6.1	5.7
22.0						5.9	5.8	5.5	5.7	5.4	5.3	5.4	5.3
24.0							4.5	5.0	4.9	4.8	4.5	4.5	4.5
26.0								4.3	4.4	4.1	4.1	3.8	3.8
28.0									3.9	3.8	3.7	3.5	3.3
30.0									3.4	3.3	3.2	3.0	2.8
32.0										2.9	2.7	2.6	2.3
34.0										2.6	2.3	2.2	2.0
36.0											2.0	1.9	1.6
38.0											1.7	1.6	1.3
40.0												1.3	1.1
42.0												1.1	0.9
44.0													0.6
46.0													0.5